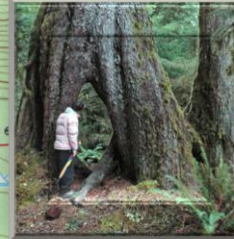
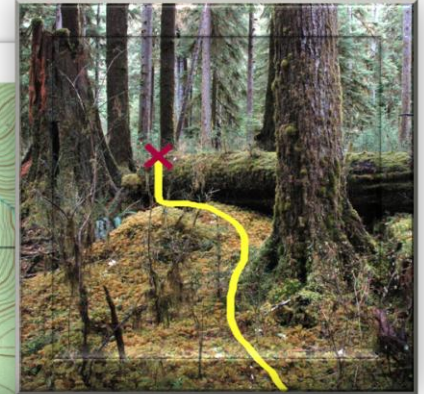
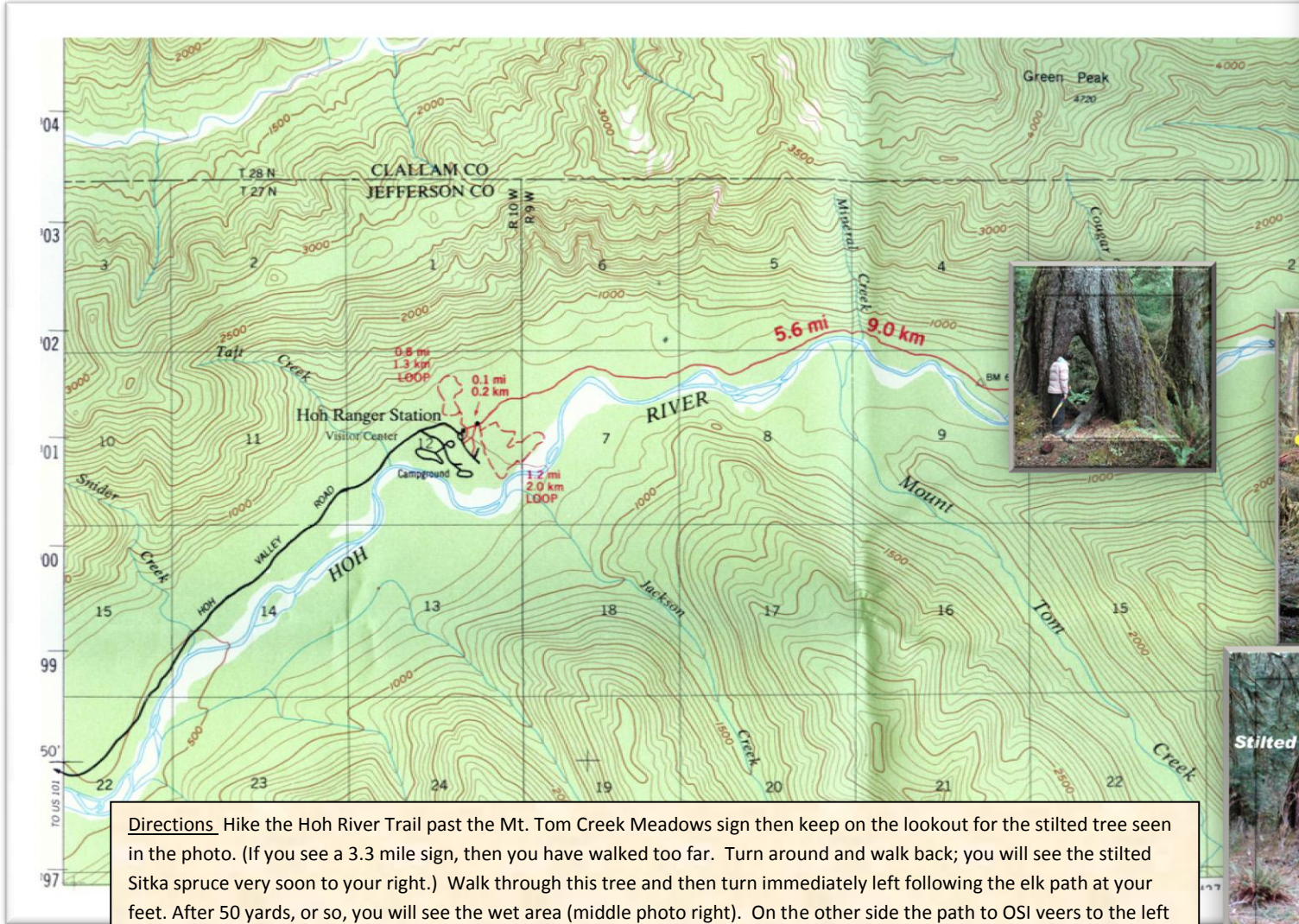




**One Square Inch of Silence** is located at Olympic National Park, 3.2 miles from the Hoh Visitor's Center on the Hoh River Trail above Mt. Tom Creek Meadows. Hiking time from the parking lot at the Visitor's Center to the site is approximately two hours along a gentle path lined by ancient trees and ferns. The exact location is marked by a small red-colored stone placed on top of a moss-covered log at **47° 51.959N, 123° 52.221W, 678 feet** above sea level. This is within the Olympic Wilderness and as with all wilderness travel you should be properly prepared. Check with one of the Rangers at the Hoh Visitors Center for weather forecasts and trail conditions, or if closed, on the bulletin boards outside. This document is advisory only. You may request to be led on a quiet walk to OSI by contacting [info@onesquareinch.org](mailto:info@onesquareinch.org). This is done without charge.



**Directions** Hike the Hoh River Trail past the Mt. Tom Creek Meadows sign then keep on the lookout for the stilted tree seen in the photo. (If you see a 3.3 mile sign, then you have walked too far. Turn around and walk back; you will see the stilted Sitka spruce very soon to your right.) Walk through this tree and then turn immediately left following the elk path at your feet. After 50 yards, or so, you will see the wet area (middle photo right). On the other side the path to OSI veers to the left (middle and top right photos). The Stone is at the far end of this mossy log, near the stump. The *Jar of Quiet Thoughts* is below, the *Stone* on top. You are welcome to read and add to the *Jar*, but please do not publish these thoughts. Check to see that the lid is snug when you are done.